

Değişmeli

Gülte - Besce

Düyek - Semâî

Kühâlihicâkêh

Ohhan Kızılsavaş

Süre : 4.20

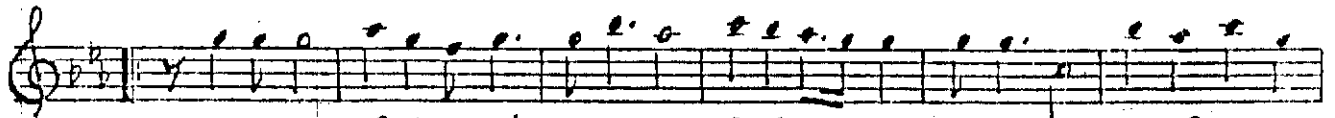
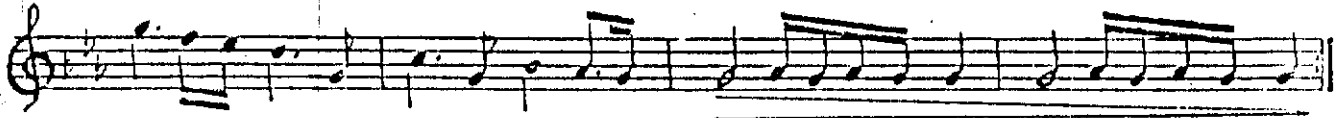
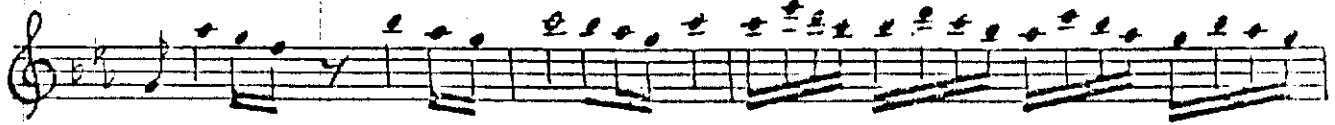
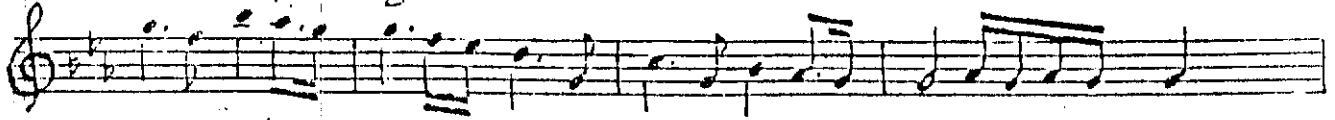
♩ : 132

UYKUSUZ SÂHİLDEYİM

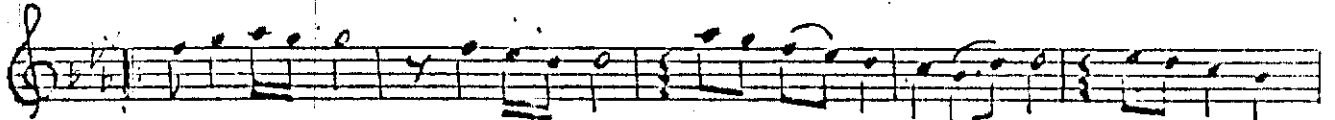
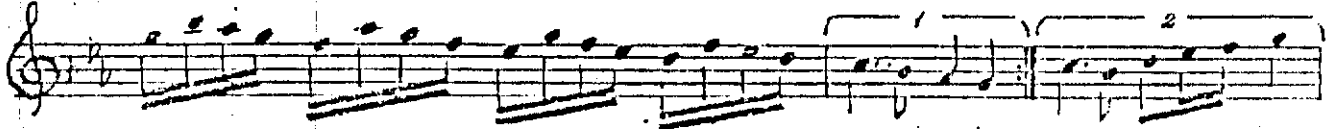
ESİN



Giriş aranağmesi



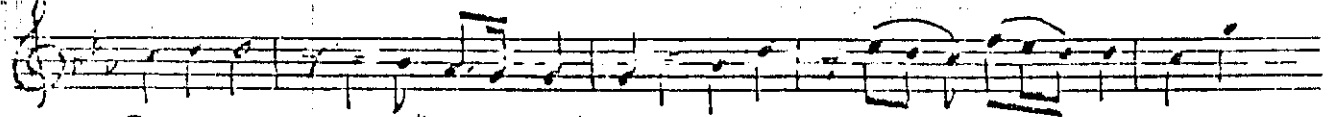
Uy ku suz sâhil de yim şafak ta rüzgârlar la şo fak ta rüzgârlar la



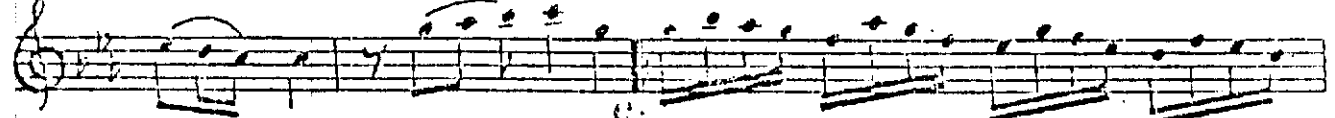
i çim de ki furtz na sula rın da der yâ mın sula rın da



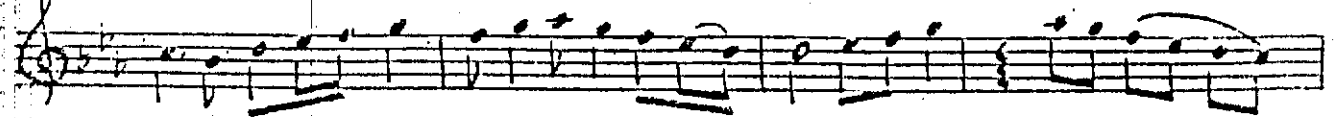
der yâ mın ————— söz



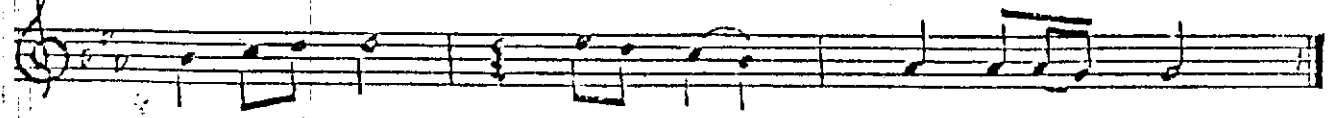
Bir vel kan hiç sö ner mi yağmur lar la ker lar la yağ mur



lar la ker lar la ————— söz



söz ————— Dudak lar ın da tu zu — söz — ka lı yor



Mar ma ra mın ka lı yor Mar ma ra mın

UYKUSUZ SAHİLBİYİM

De niz hırs tan kö pür müş - s a z - hay k ı r ı y o r
 se her de — s e z — — s e z — Pa r a m p a r ç a
 — s a z — d a l g a - l a r k ı y ı d a — s e z — ü m i t l e r d e
 — s e z — Ç o k u z a k t a k u ş l a r ı n
 — s a z — g i d e m e d i ğ i y e r d e
 s e z — — R ū h u m m â v i s ū l a r ı n b e d e n i m
 s e k a r a n ı n b e d e n i m s e k a r a n ı n
 (Ağırca) U y k u s u z s â h i l d e y i m — — s o z — —